

ALAMEDA COUNTY

REDISTRICTING 2021

Public Hearing – December 2, 2021
District 3 Meeting

Karin Mac Donald & Jane Hood
Q2 Data & Research, LLC
Alameda County Redistricting Consultants

Chris Bazar, Casey Farmer & Sandi Rivera
Community Development Agency
Alameda County

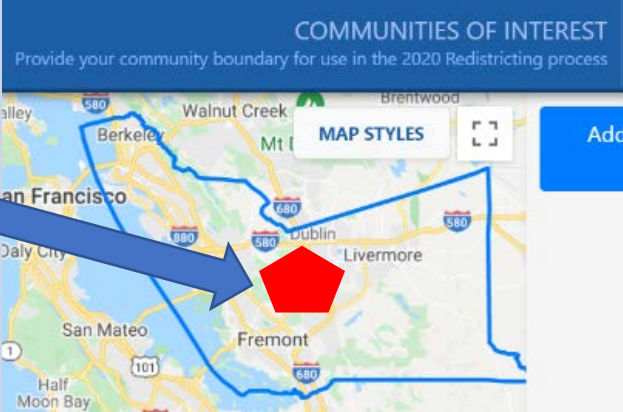
<https://redistricting2021.acgov.org>



Outline

- Public Input Summary
 - Map Submittals from the Public
- Draft and Visualization Maps
- Board receive Public Comments
- Provide direction to consultant and staff on any draft map modifications
- Board select 1 or more draft map(s) for consideration as a final map on 12/7

Public Input To Date

Method of Participation	Inputs as of 12/1/2021
<p>“Community of Interest” Online Tool Submissions</p> 	<p>146</p>
<p>Written comments: <i>Emails, comments on the webpage, or mailed in</i></p>	<p>157</p>
<p>Proposed public maps <i>Online mapping program launched on October 11</i></p>	<p>4</p>

All public input is posted on Redistricting2021.acgov.org

Final Meeting to Draw Draft Map(s)

- Draft Map(s) that are selected or drawn tonight (12/2) may be the Final Map for adoption and **cannot be modified after this meeting**
 - If the Board fails to timely adopt new district boundaries, it must immediately petition the superior court for an order adopting district boundaries. If the Board does not file the petition within 5 days, any resident of the county may do so and shall recover attorney fees and costs.
- Draft Map A was drawn by the Board on 11/16/2021
- Draft Maps A1, A2, and A3 were drawn based on the Board direction received on 11/23 and are variations based on Draft Map A
- Additional Visualization Maps A1, A2, and A3 were created by consultants/staff to illustrate other scenarios
- The Board may select 1 or more maps as Draft Maps (for consideration as a Final Map); make live modifications; or draw new Draft maps.

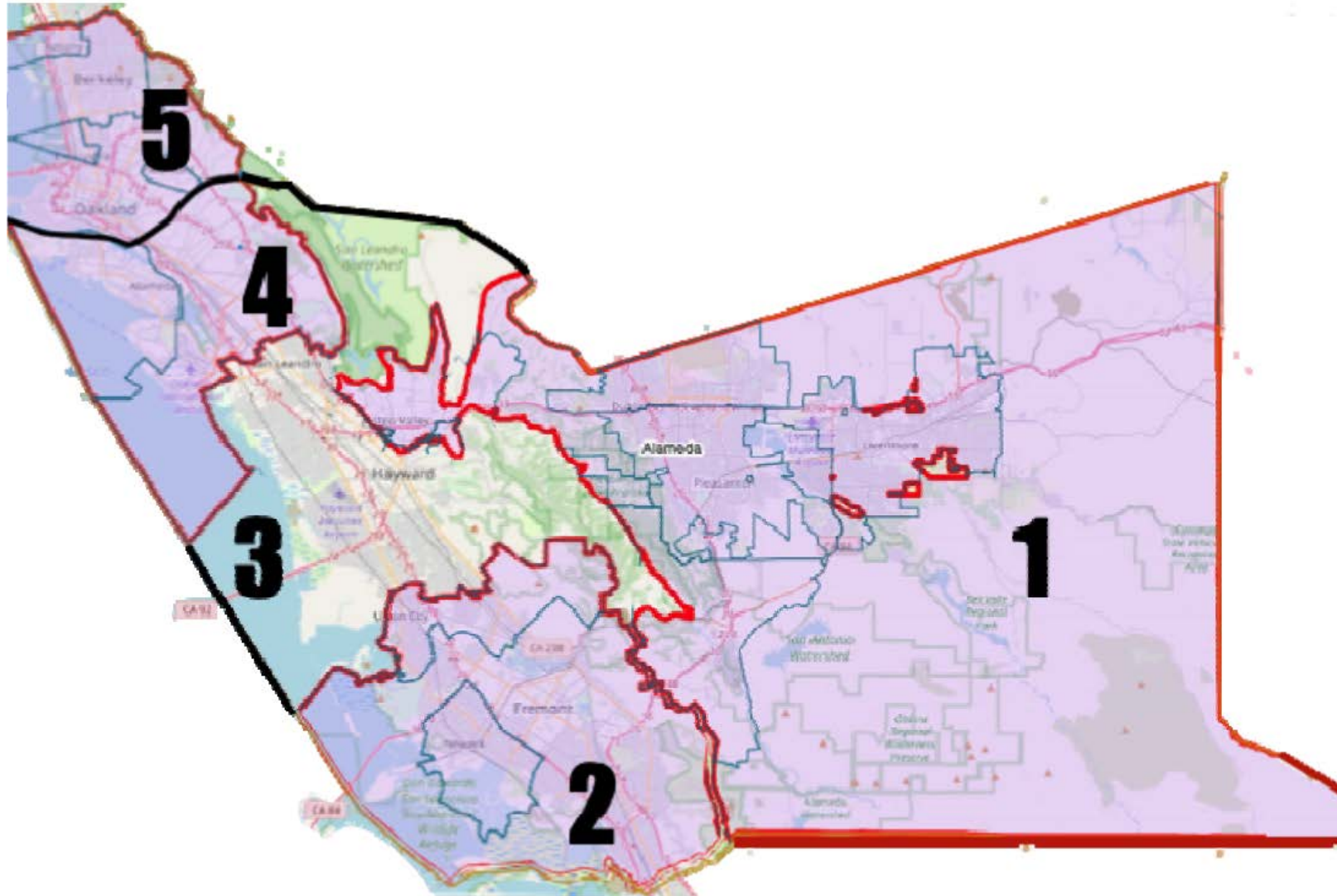
Map Categories

- Map Submittals from the Public
- Draft Maps
 - Drawn based on the Board direction
- Visualization Maps
 - Variation to the corresponding Draft Map
 - Created by consultants/staff to illustrate scenarios that incorporate Board input received at previous meetings and maintain the principal theme of the corresponding Draft Map

Public Map Submittal 1

2 Districts in Oakland

2 Districts in Urban Unincorporated Area

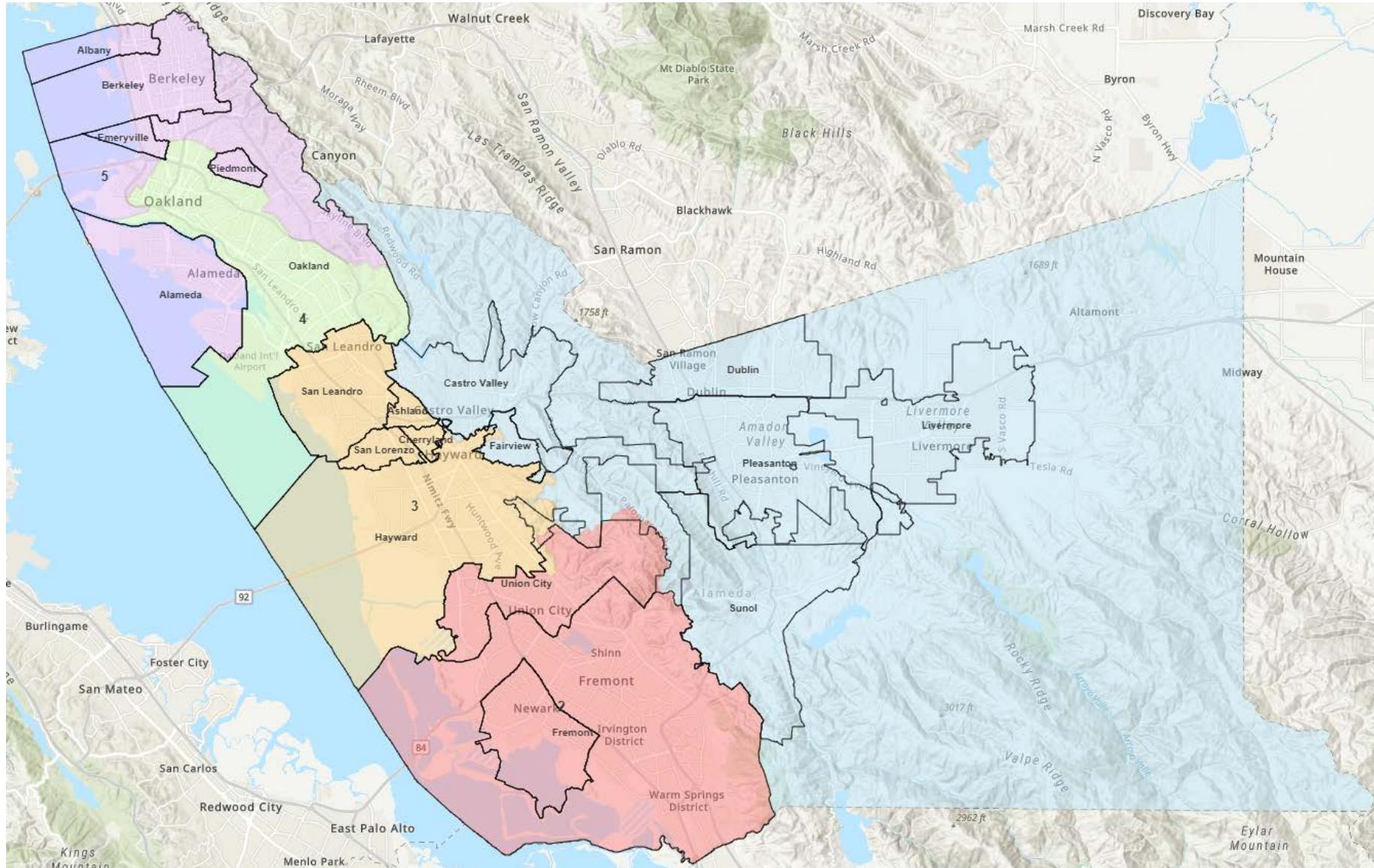


District	City/CDP
1	Livermore, Pleasanton, Dublin, Castro Valley, Sunol, East Unincorporated Area, Hayward (minor portion)
2	Newark, Union City, Fremont
3	Cherryland, Ashland, San Lorenzo, Fairview, Hayward (major portion) , San Leandro, Uninc. Remainder (Palomares Rd)
4	Alameda, Oakland (portion)
5	Berkeley, Albany, Emeryville, Piedmont, Oakland (portion)

Public Map Submittal 2

2 Districts in Oakland

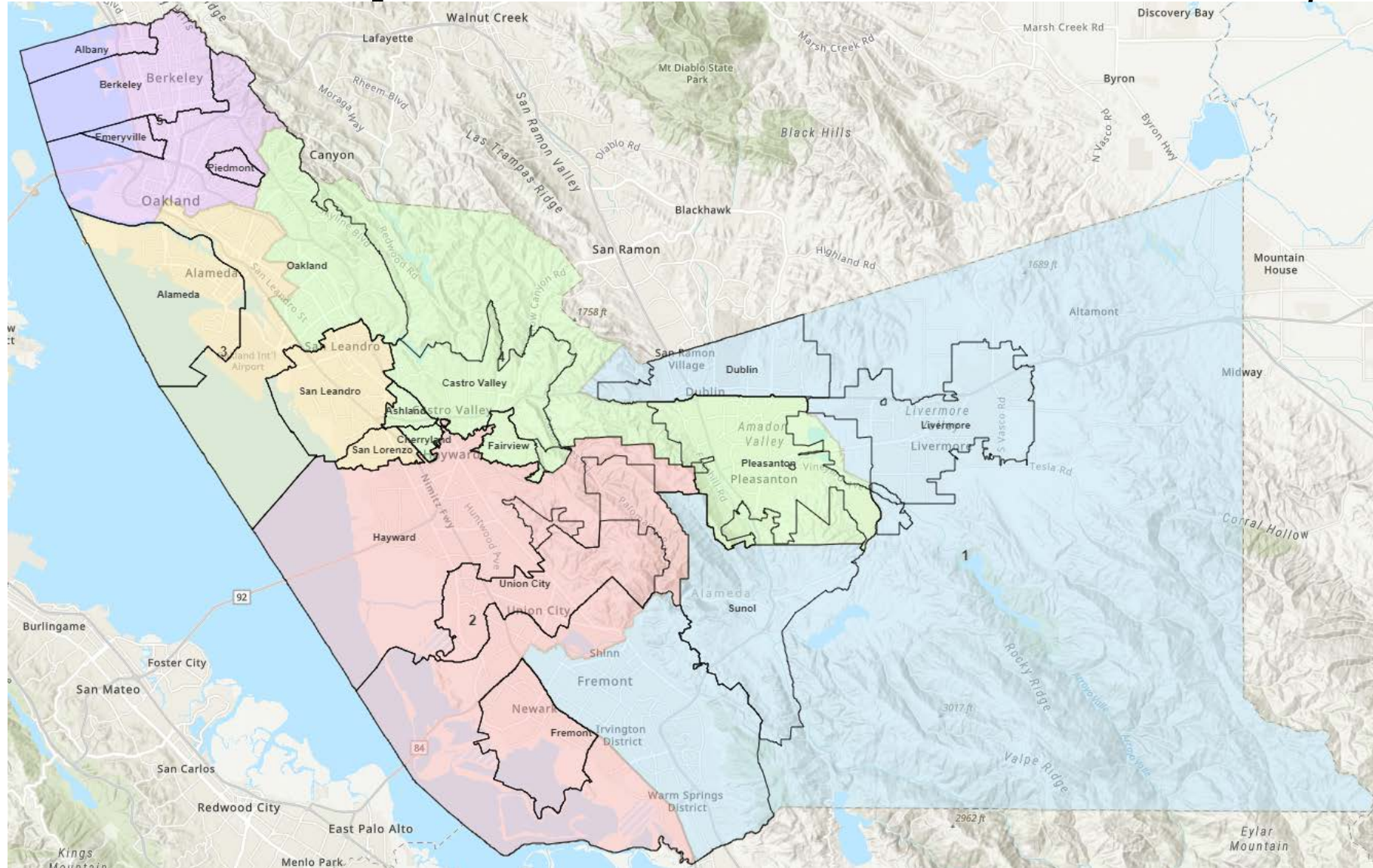
2 Districts in Urban Unincorporated Area



District	City/CDP
1	Dublin, Livermore, Pleasanton, Sunol, Castro Valley, Fairview, Hayward (minor portion) , East County Unincorporated Area
2	Fremont, Newark, Union City
3	Hayward (major portion) , San Leandro, Ashland, Cherryland, San Lorenzo
4	Oakland (portion)
5	Albany, Berkeley, Emeryville, Piedmont, Alameda, Oakland (portion)

Public Map Submittal 3

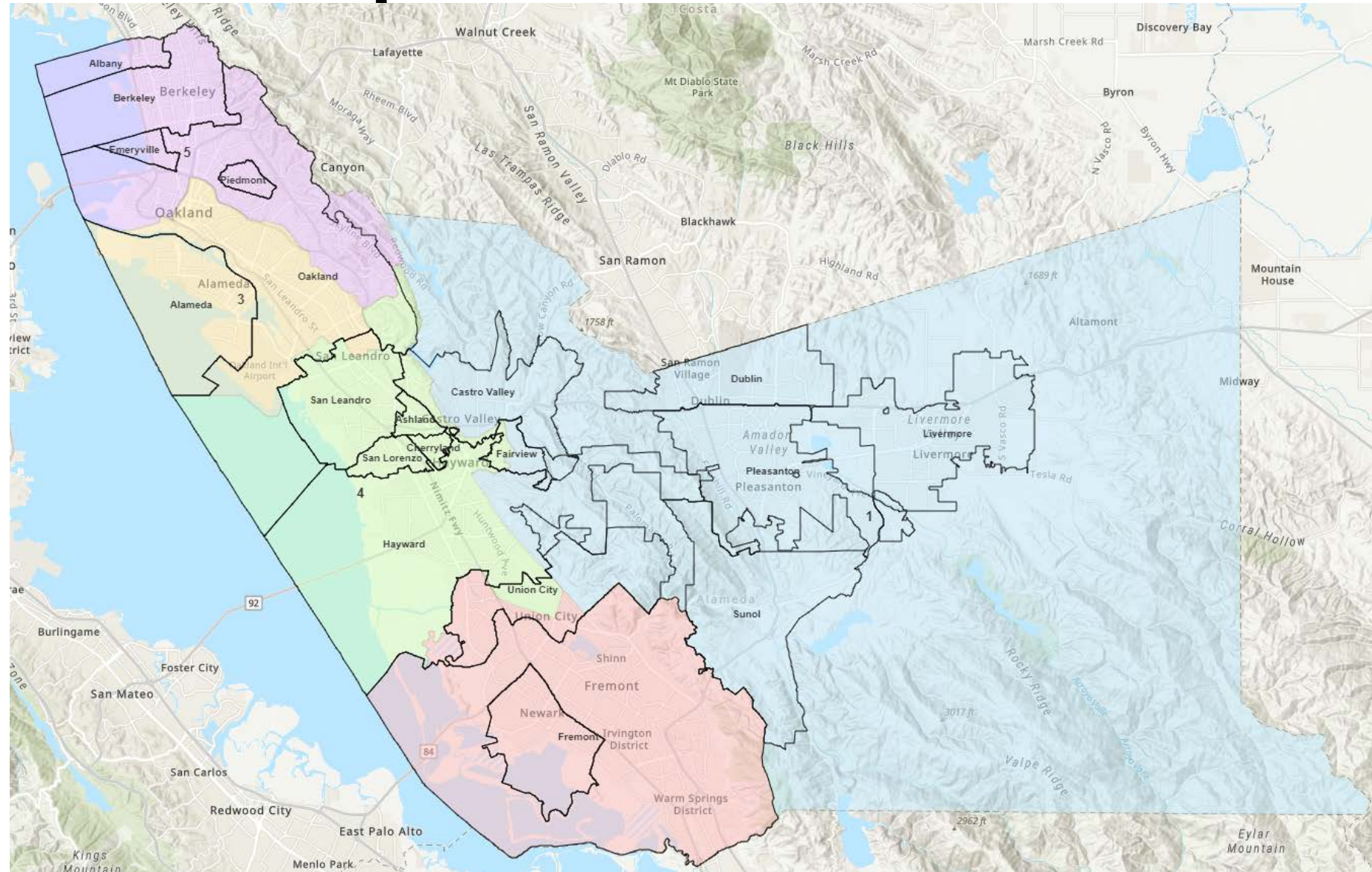
3 Districts in Oakland
2 Districts in Urban Unincorporated Area
Similar to Draft Map A & Visualization Map A1



District	City/CDP
1	Dublin, Livermore, Sunol, Fremont (portion) , East Unincorporated Area
2	Fremont (portion) , Newark, Union City
3	Alameda, San Leandro, San Lorenzo, Oakland (portion)
4	Oakland (portion) , Ashland, Castro Valley, Cherryland, Fairview, Pleasanton
5	Albany, Berkeley, Emeryville, Piedmont, Oakland (portion)

Public Map Submittal 4

3 Districts in Oakland – Minor portion in D4
2 Districts in Urban Unincorporated Area



District	City/CDP
1	Dublin, Livermore, Pleasanton, Sunol Castro Valley (portion), Fairview (portion), Hayward (portion), East County Unincorporated Area
2	Fremont, Newark, Union City (portion)
3	San Leandro (minor portion), Oakland (portion), Alameda
4	Oakland (minor portion), San Leandro (major portion), Ashland, Cherryland, San Lorenzo, Castro Valley (portion), Fairview (portion) Hayward (portion), Union city (portion)
5	Albany, Berkeley, Emeryville, Piedmont, Oakland (portion)

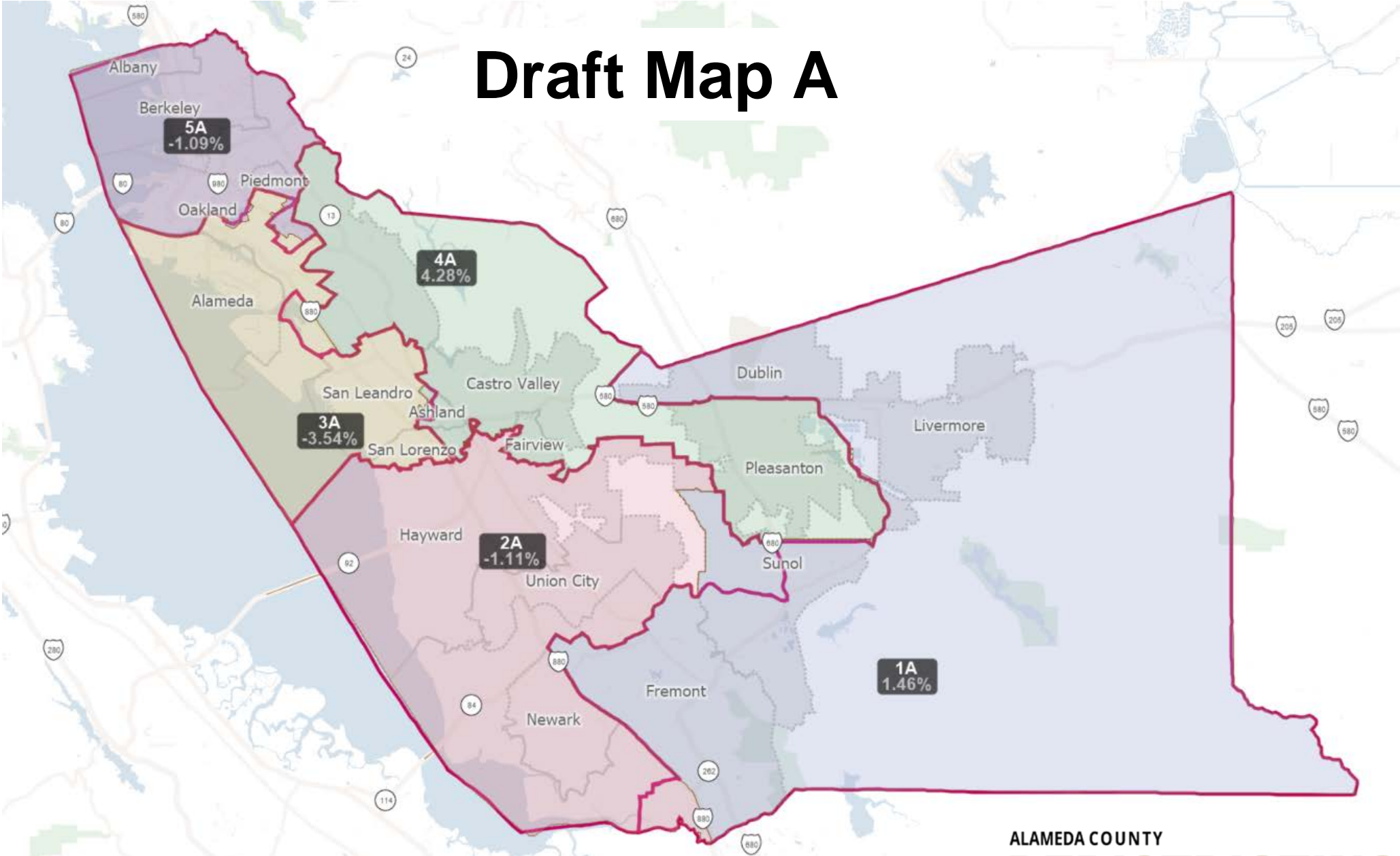
Map Themes

- Themes of the Draft and Visualization Maps

All maps have 3 districts in Oakland and 2 districts in the urban unincorporated area

- Minor changes to the Current District Map – *Draft Map A*
- Minimize splitting the Unity Council and Black Cultural Zone COIs – *Draft Map A1, Visualization Maps: A1, A2, A3*
- Unified Tri-Valley District (including the City of Pleasanton in District 1) – *Draft Map A2, Visualization Map A2*
- Portion of City of Pleasanton into D1 – *Draft Map A3, Visualization Map A3*

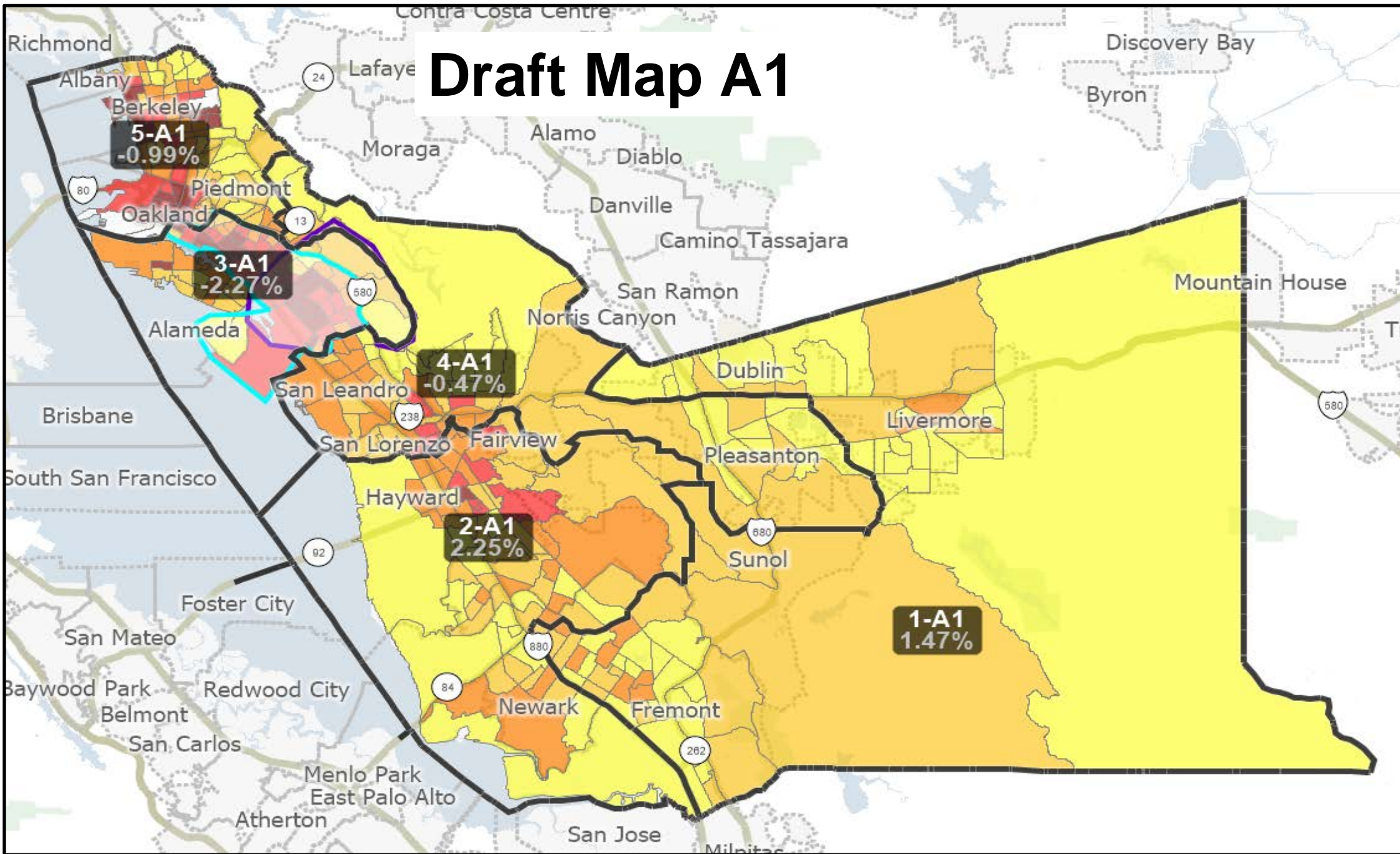
Draft Map A



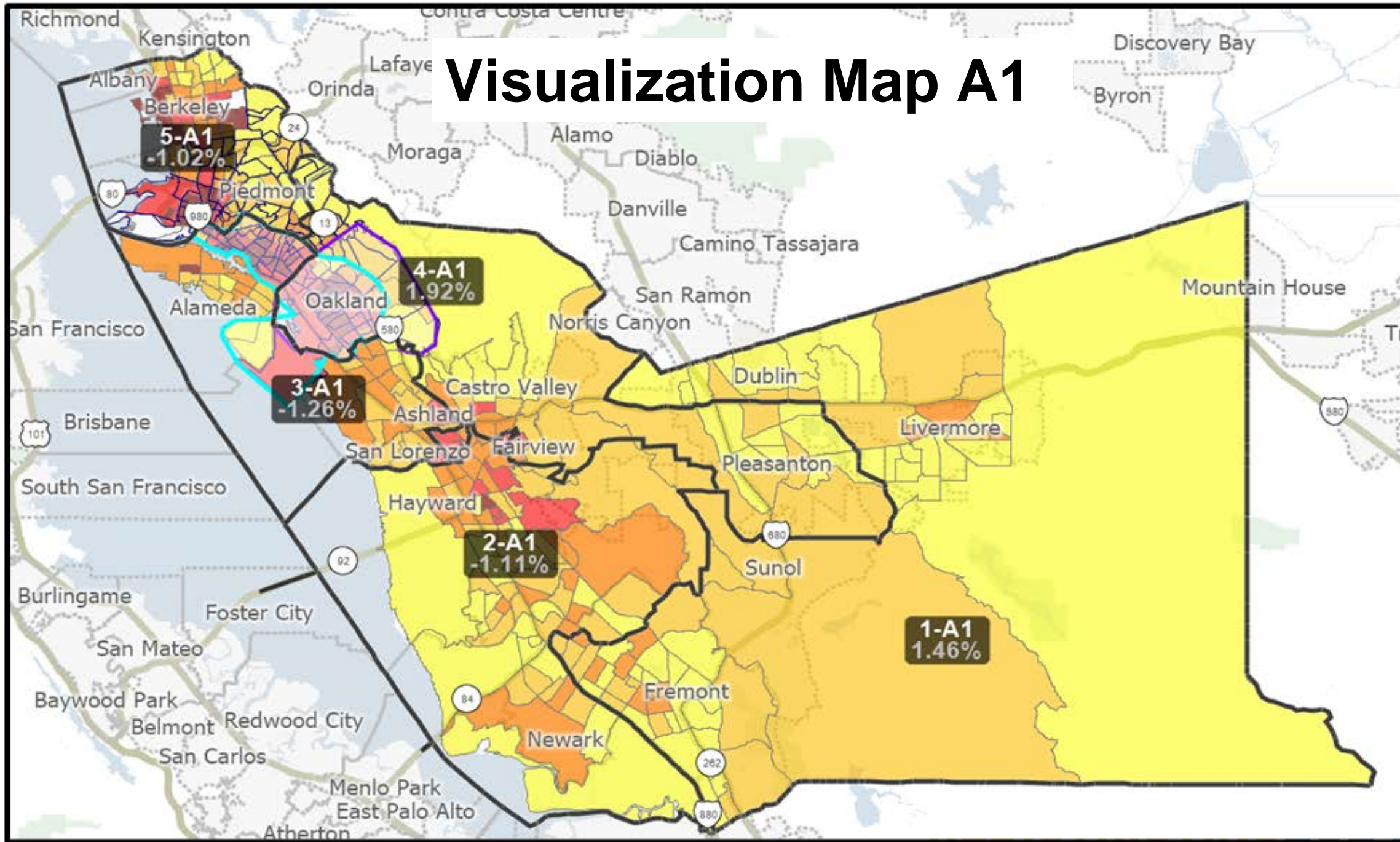
Current Alameda County Board of Supervisor districts are shown in pink.
Draft Map A boundaries are shown in brown and shown with colors and labels.
November 18, 2021

ALAMEDA COUNTY
REDISTRICTING2021

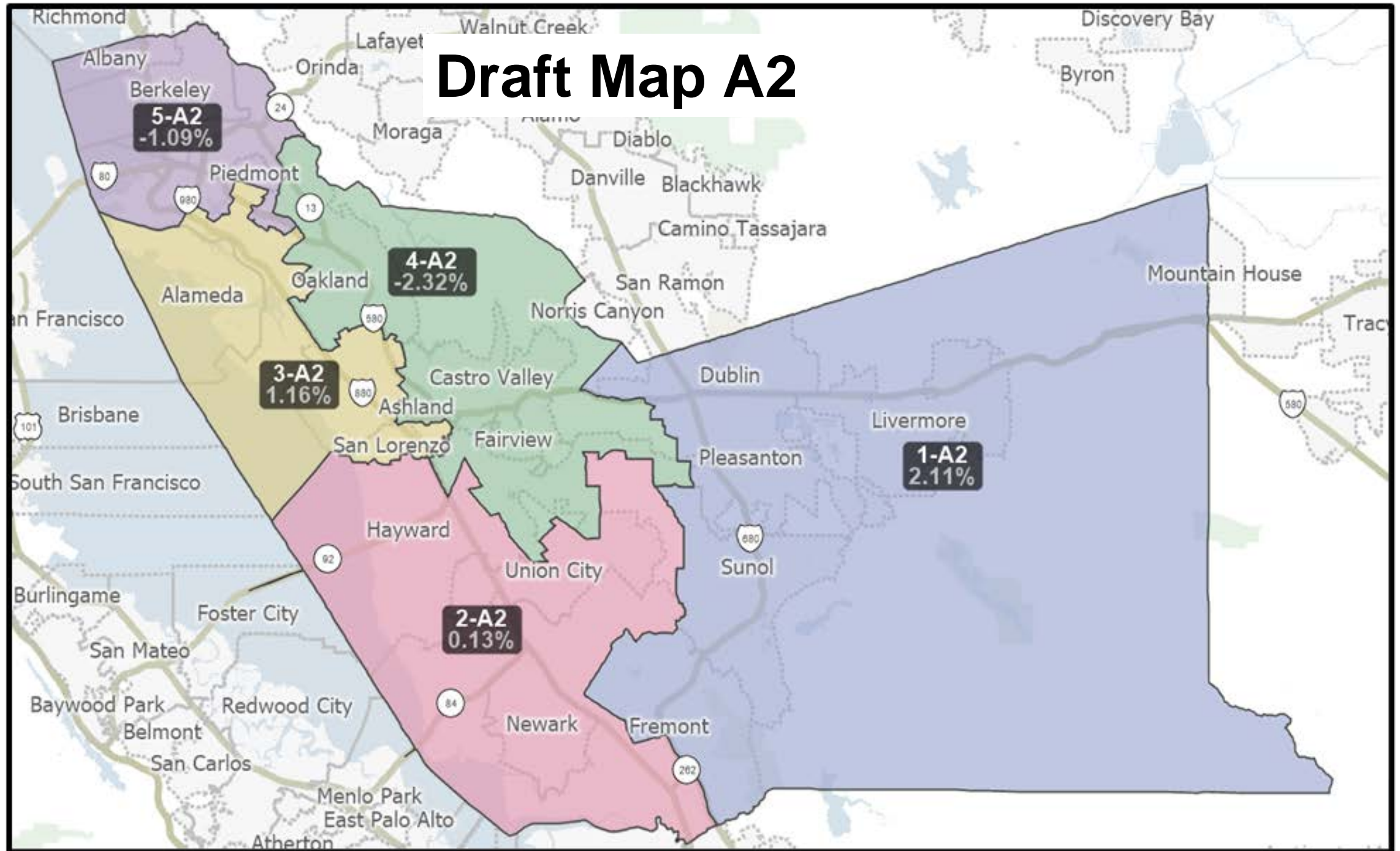
Draft Map A1



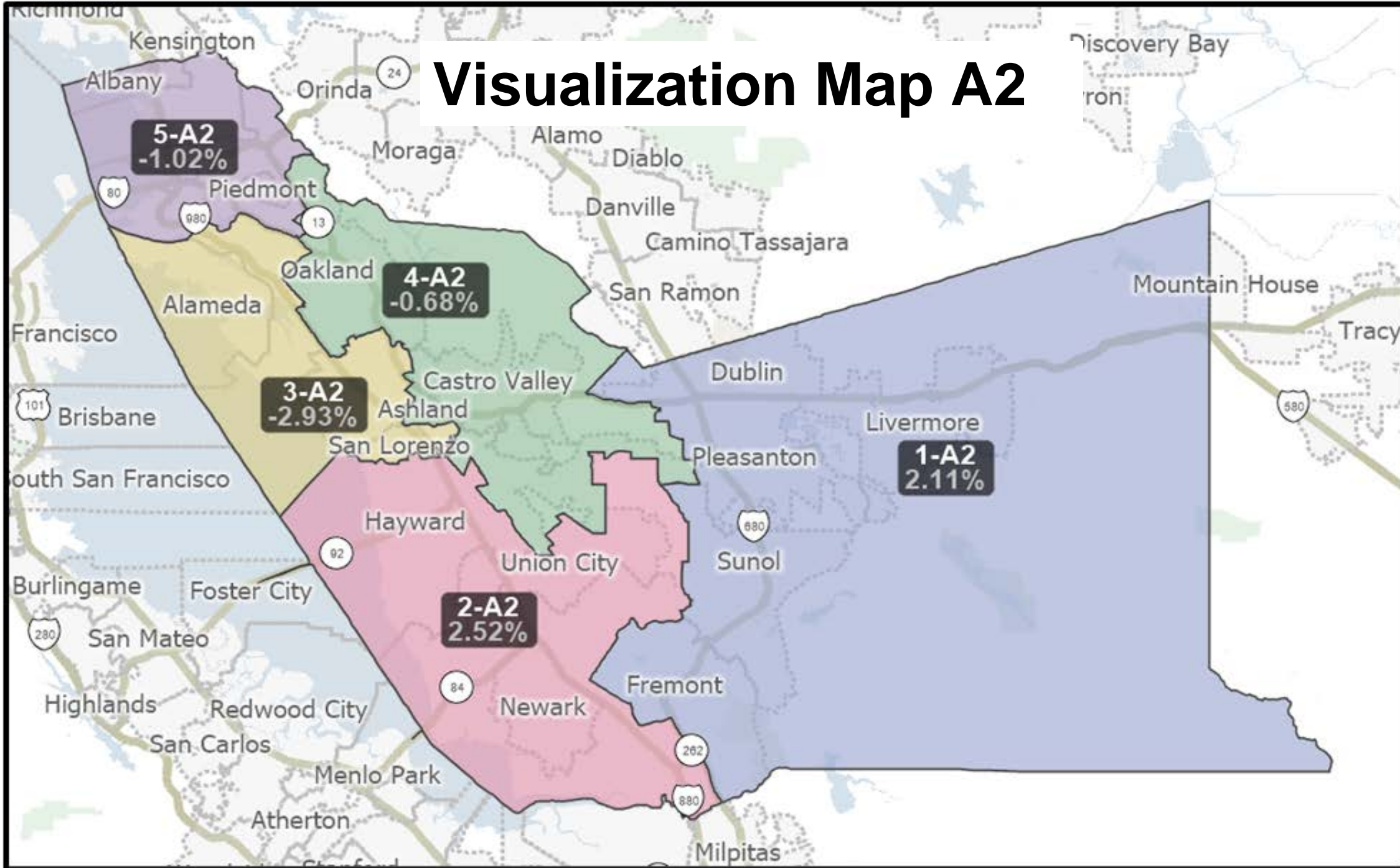
Visualization Map A1



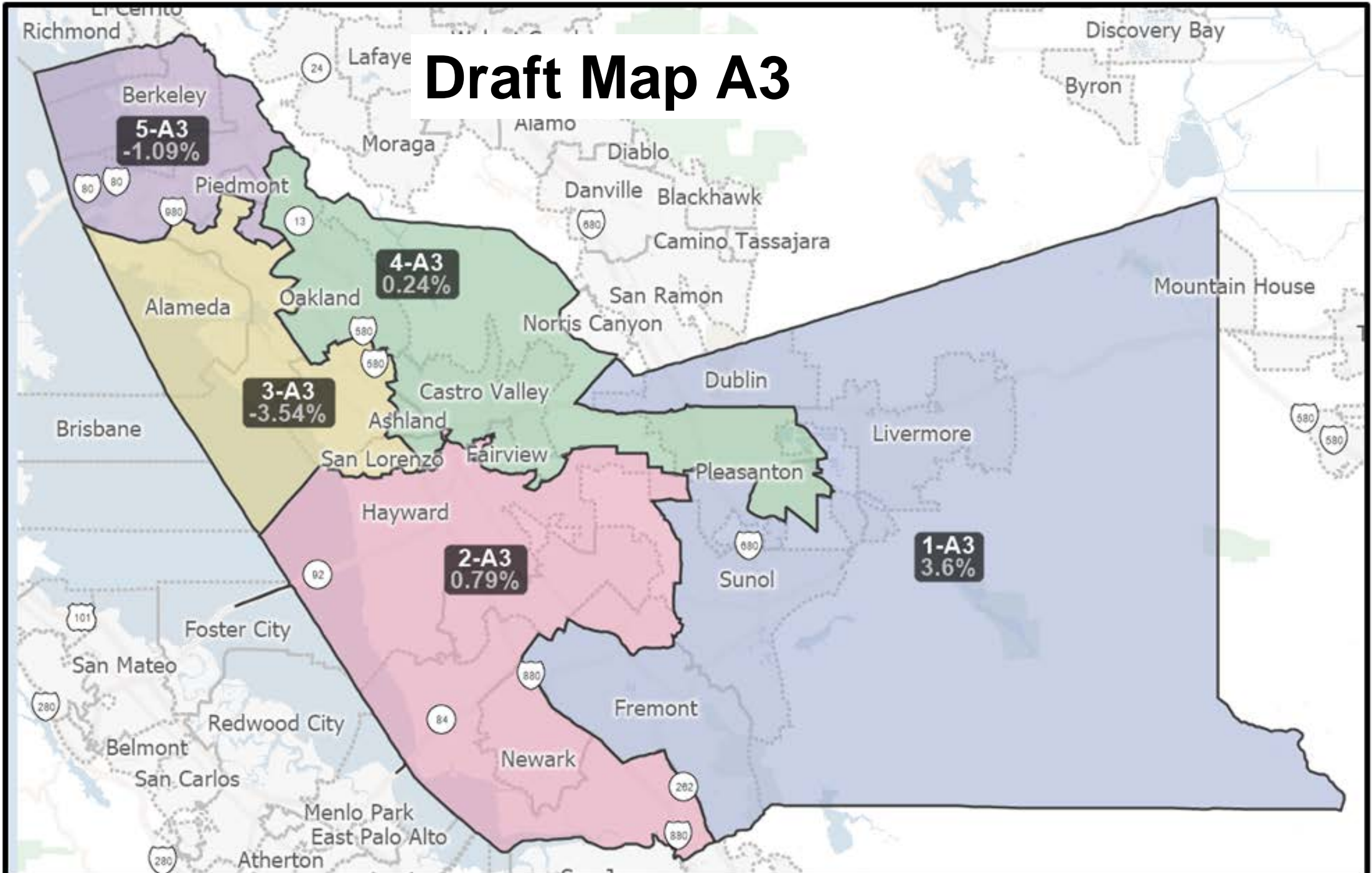
Draft Map A2



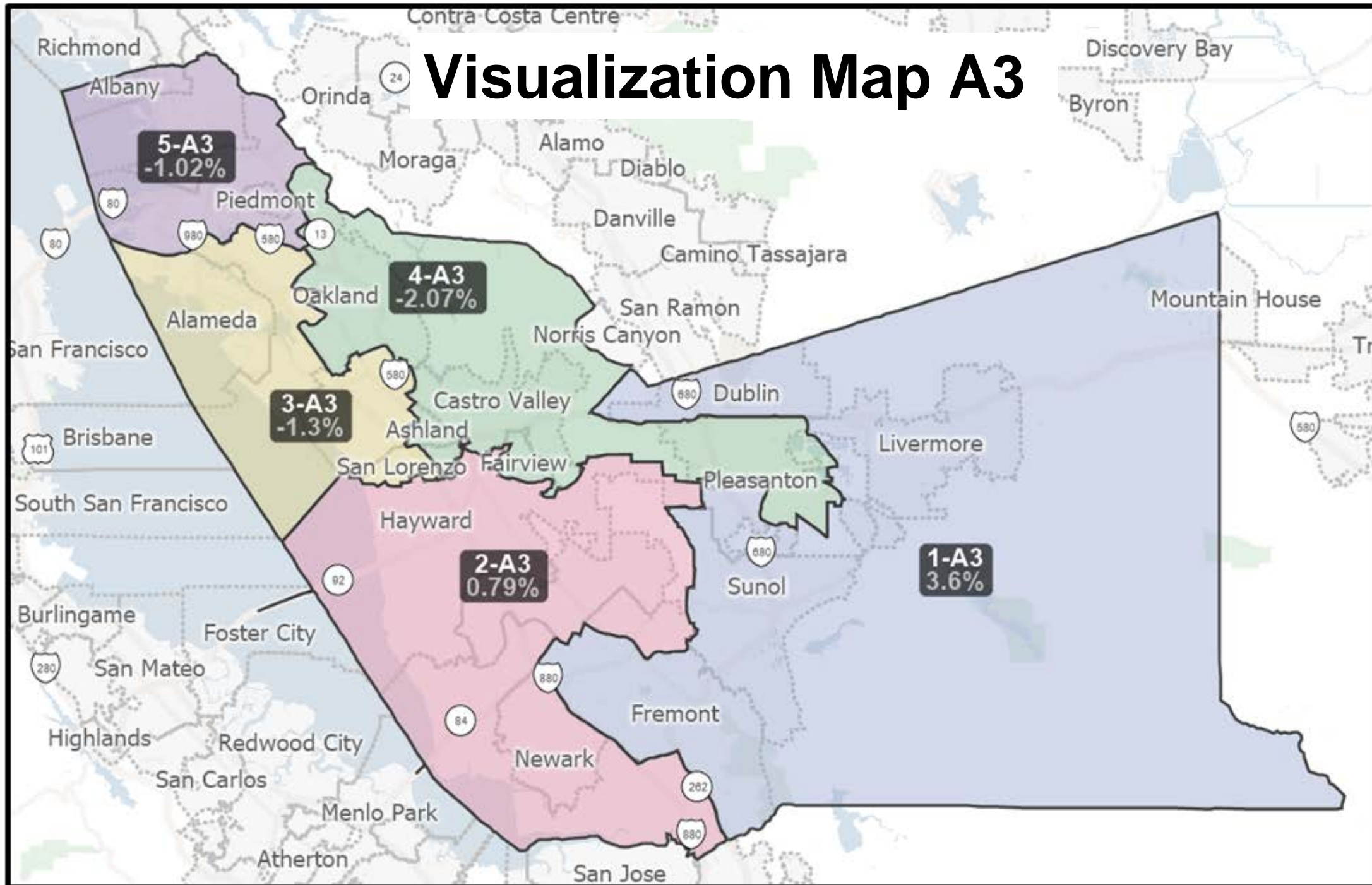
Visualization Map A2



Draft Map A3



Visualization Map A3





QUESTIONS?

<https://redistricting2021.acgov.org>

Draft Map and COI/Map Submittals Overview

(Change to live map presentation)

What are the mapping criteria?

*FAIR MAPS ACT of 2019 (incorporating Alameda County Charter Criteria)
Criteria are Ranked in Order of Priority (“to the extent practicable”)*

- Compliance with US and CA Constitution (**equal population**)
- Compliance with **federal Voting Rights Act** (race and language minorities)
- **Contiguity**
- Respect for (minimize division of) **local neighborhoods** and **Communities of Interest** (COIs)
 - COIs may not include relationships with political parties, incumbents, or political candidates.

What are the mapping criteria? (continued)

Criteria Ranked in Order of Priority (“to the extent practicable”)

- Respect for (minimize division of) **Cities** and **Census Designated Places**
- Boundaries should be **easily identifiable and understandable** by residents
- **Compactness:** If it doesn’t conflict with preceding criteria
- Do not favor or discriminate against political parties

For Reference: Redistricting Meeting Schedule

Board Meeting Date/Time	Action	Content
Tuesday 11/23 at 6pm (District meeting per Admin Code – District 4)	Review maps, hear from the public, narrow down to a map for consideration, and provide direction to staff/consultant.	Overview of draft maps. Adjust map as directed.
Thursday 12/2 at 6pm (District meeting per Admin Code – District 3)	Review maps, hear from the public, and approve map for adoption	Overview of map. Make final map adjustments.
Tuesday, 12/7 at 12pm	First Reading of Ordinance	Overview of map and ordinance.
Tuesday, 12/14 at 12pm	Second Reading of Ordinance	Adopt Final Map

ALAMEDA COUNTY

REDISTRICTING2021

Draft Map A - Demographics

Draft Map A Demographics

Draft Map A							
District	Population	% Deviation	% Latino CVAP	% Black CVAP	% Asian CVAP	% Indigenous CVAP	% Non-Hispanic White CVAP
1A	341626	1.46%	13.57%	3.95%	35.87%	0.64%	44.56%
2A	332944	-1.11%	25.03%	8.75%	39.09%	0.53%	23.34%
3A	324770	-3.54%	20.03%	13.94%	30.92%	0.62%	32.55%
4A	351100	4.28%	16.83%	21.69%	18.74%	0.47%	40.64%
5A	333028	-1.09%	9.89%	15.75%	18.51%	0.78%	53.52%

Racial and ethnic characteristics of the Citizens Voting Age Population (CVAP) are tabulated according to Department of Justice standards.

Draft Map A1 - Demographics

Draft Map A1							
District	Population	% Deviation	% Latino CVAP	% Black CVAP	% Asian CVAP	% Indigenous CVAP	% Non-Hispanic White CVAP
1-A1	341648	1.47%	13.58%	3.95%	35.87%	0.64%	44.56%
2-A1	344275	2.25%	24.84%	9.26%	38.39%	0.52%	23.82%
3-A1	329060	-2.27%	19.29%	27.88%	23.32%	0.47%	26.97%
4-A1	335126	-0.47%	17.91%	9.09%	26.61%	0.63%	44.16%
5-A1	333359	-0.99%	9.52%	15.32%	18.01%	0.77%	54.86%

Draft Map A2 - Demographics

Draft Map A2							
District	Population	% Deviation	% Latino CVAP	% Black CVAP	% Asian CVAP	% Indigenous CVAP	% Non-Hispanic White CVAP
1-A2	343814	2.11%	11.79%	3.31%	32.49%	0.56%	50.63%
2-A2	337125	0.13%	22.25%	6.23%	42.49%	0.53%	25.56%
3-A2	340613	1.16%	20.83%	13.93%	30.15%	0.61%	32.50%
4-A2	328888	-2.32%	20.63%	25.65%	18.74%	0.56%	32.33%
5-A2	333028	-1.09%	9.89%	15.75%	18.51%	0.78%	53.52%

Draft Map A3 - Demographics

Draft Map A3							
District	Population	% Deviation	% Latino CVAP	% Black CVAP	% Asian CVAP	% Indigenous CVAP	% Non-Hispanic White CVAP
1-A3	348812	3.60%	13.35%	3.98%	34.86%	0.62%	45.88%
2-A3	339358	0.79%	24.87%	8.57%	39.77%	0.54%	23.00%
3-A3	324770	-3.54%	20.03%	13.94%	30.92%	0.62%	32.55%
4-A3	337500	0.24%	17.23%	22.59%	18.26%	0.48%	39.72%
5-A3	333028	-1.09%	9.89%	15.75%	18.51%	0.78%	53.52%

