

ALAMEDA COUNTY

# REDISTRICTING 2021

**Public Hearing – December 7, 2021**

Karin Mac Donald & Jane Hood  
Q2 Data & Research, LLC  
*Alameda County Redistricting Consultants*

Chris Bazar, Casey Farmer & Sandi Rivera  
Community Development Agency  
Alameda County

<https://redistricting2021.acgov.org>



# Outline

---

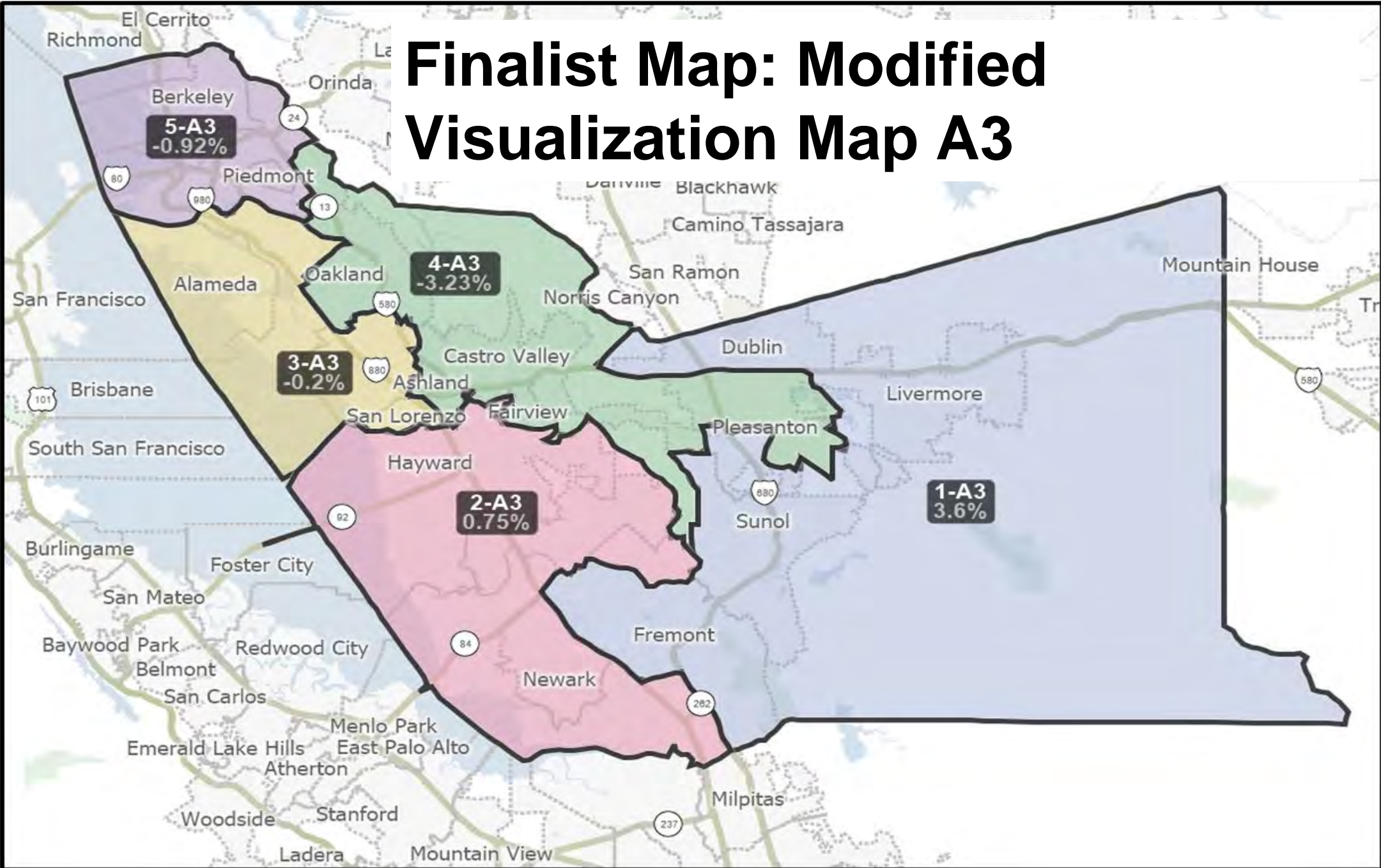
- Background of Finalist Map
- Review of Finalist Map and Data
- Provide direction to consultant and staff on potential modifications
- Review and Finalize Map for First Reading of Ordinance

# Background

---

- In April 2021, the Board initiated the redistricting process to adjust the boundaries of the supervisorial districts of the County of Alameda as required by the Election Code.
- The Board approved a transparent and inclusive redistricting process, which included resources for public outreach, and hired Q2 Data & Research, a local professional redistricting consultant.
- The Board held a series of eight virtual public meetings between September 21 and December 2 to obtain public input on Communities of Interest (COI) and proposed redistricting map alternatives.
- On November 16, based on input received, the Board selected Visualization A to move forward as a draft map (Draft map A).
- Draft Maps A1, A2, and A3 were drawn based on the Board direction received on November 23 and are variations based on Draft Map A. Additional Visualization Maps A1, A2, and A3 were created by consultants/staff to illustrate scenarios that incorporated Board input received at previous meetings and maintain the principal theme of the corresponding Draft Map.
- After public comment and consideration, the Board modified visualization map A3 at the December 2 meeting and voted to move forward Modified Visualization A3 for consideration for adoption.

# Finalist Map: Modified Visualization Map A3



# Finalist Map Demographics

---

## Modified Visualization Map A3

District	Population	% Deviation	% Latino CVAP	% Black CVAP	% Asian CVAP	% Indigenous CVAP	% White CVAP
1-A3	348,812	3.60%	13.35%	3.98%	34.86%	0.62%	45.88%
2-A3	339,224	0.75%	24.87%	8.57%	39.78%	0.54%	22.98%
3-A3	336,033	-0.20%	19.89%	14.88%	30.88%	0.61%	31.86%
4-A3	325,815	-3.23%	17.72%	22.50%	18.32%	0.49%	39.16%
5-A3	333,584	-0.92%	9.53%	15.32%	18.01%	0.78%	54.84%

Racial and ethnic characteristics of the Citizens Voting Age Population (CVAP) are tabulated according to the Department of Justice standards.

# Population by City/Census Places by District

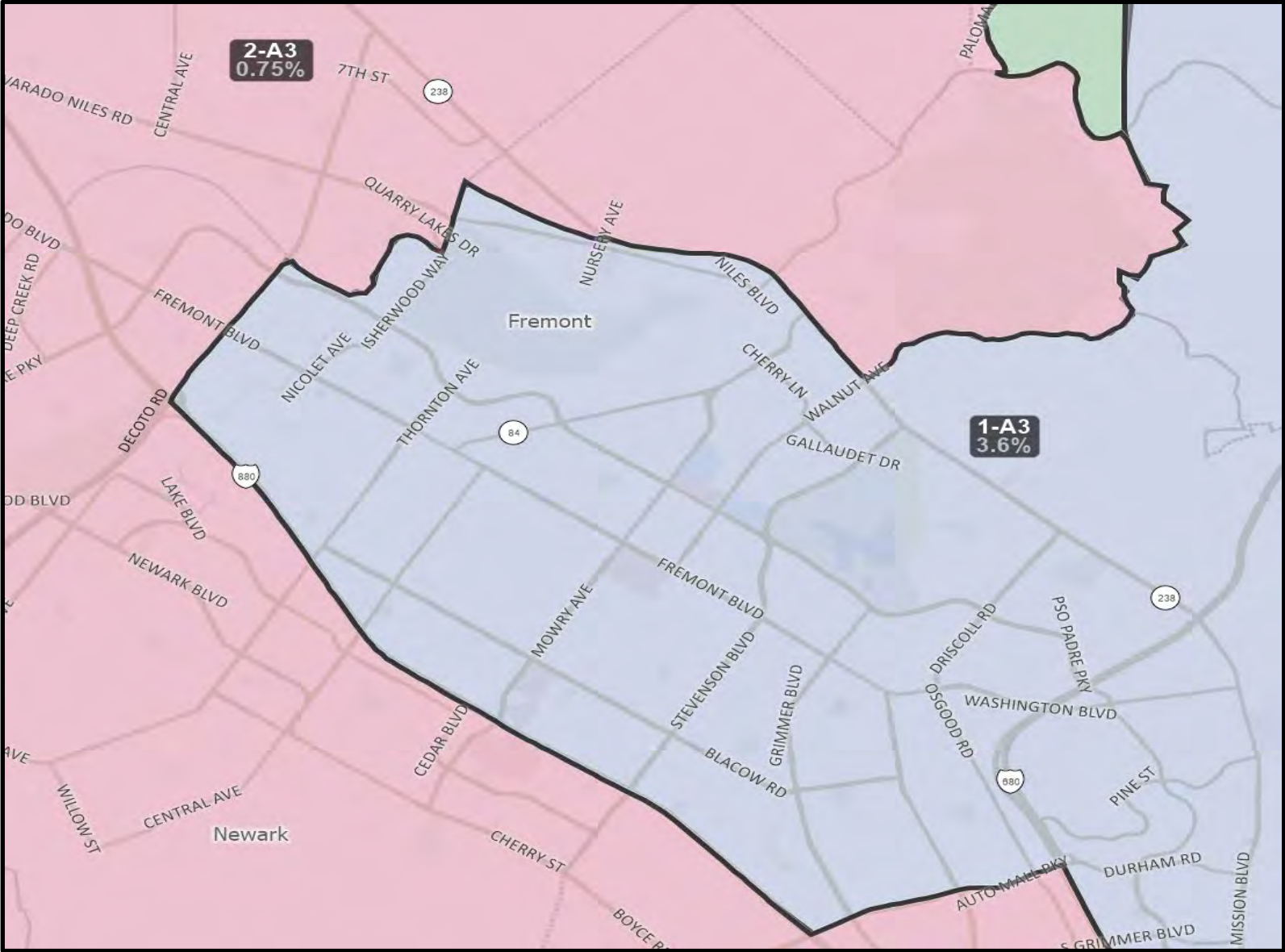
District 1			
City/CDP	Population	% of District	% of City/CDP
Dublin	71,468	20.49%	100%
Livermore	88,006	25.23%	100%
Pleasanton (part of)	12,685	3.64%	15.88%
Sunol	922	0.26%	100%
Fremont (part of)	172,462	49.44%	74.77%
Other unincorporated areas	3,269	0.94%	N/A
<b>District 1 Total:</b>	<b>348,812</b>		
District 2			
City/CDP	Population	% of District	% of City/CDP
Union City	70,216	20.70%	100%
Hayward (part of)	163,142	48.09%	99.98%
Newark	47,570	14.02%	100%
Fremont (part of)	58,187	17.15%	25.23%
Other unincorporated areas	109	0.03%	N/A
<b>District 2 Total:</b>	<b>339,224</b>		
District 3			
City/CDP	Population	% of District	% of City/CDP
San Lorenzo	29,615	8.81%	100%
San Leandro	91,103	27.11%	100%
Alameda	78,351	23.32%	100%
Oakland (part of)	136,964	40.76%	30.99%
<b>District 3 Total:</b>	<b>336,033</b>		

District 4			
City/CDP	Population	% of District	% of City/CDP
Pleasanton (part of)	67,209	20.63%	84.12%
Hayward (part of)	30	0.01%	0.02%
Fairview	11,353	3.48%	100%
Cherryland	15,843	4.86%	100%
Ashland	23,837	7.32%	100%
Castro Valley	66,492	20.41%	100%
Oakland (part of)	140,236	43.04%	31.74%
Other Unincorporated Areas	815	0.25%	N/A
<b>District 4 Total:</b>	<b>325,815</b>		
District 5			
City/CDP	Population	% of District	% of City/CDP
Albany	20,275	6.08%	100%
Berkeley	124,433	37.30%	100%
Emeryville	12,911	3.87%	100%
Piedmont	11,274	3.38%	100%
Oakland (part of)	164,691	49.37%	37.27%
<b>District 5 Total:</b>	<b>333,584</b>		

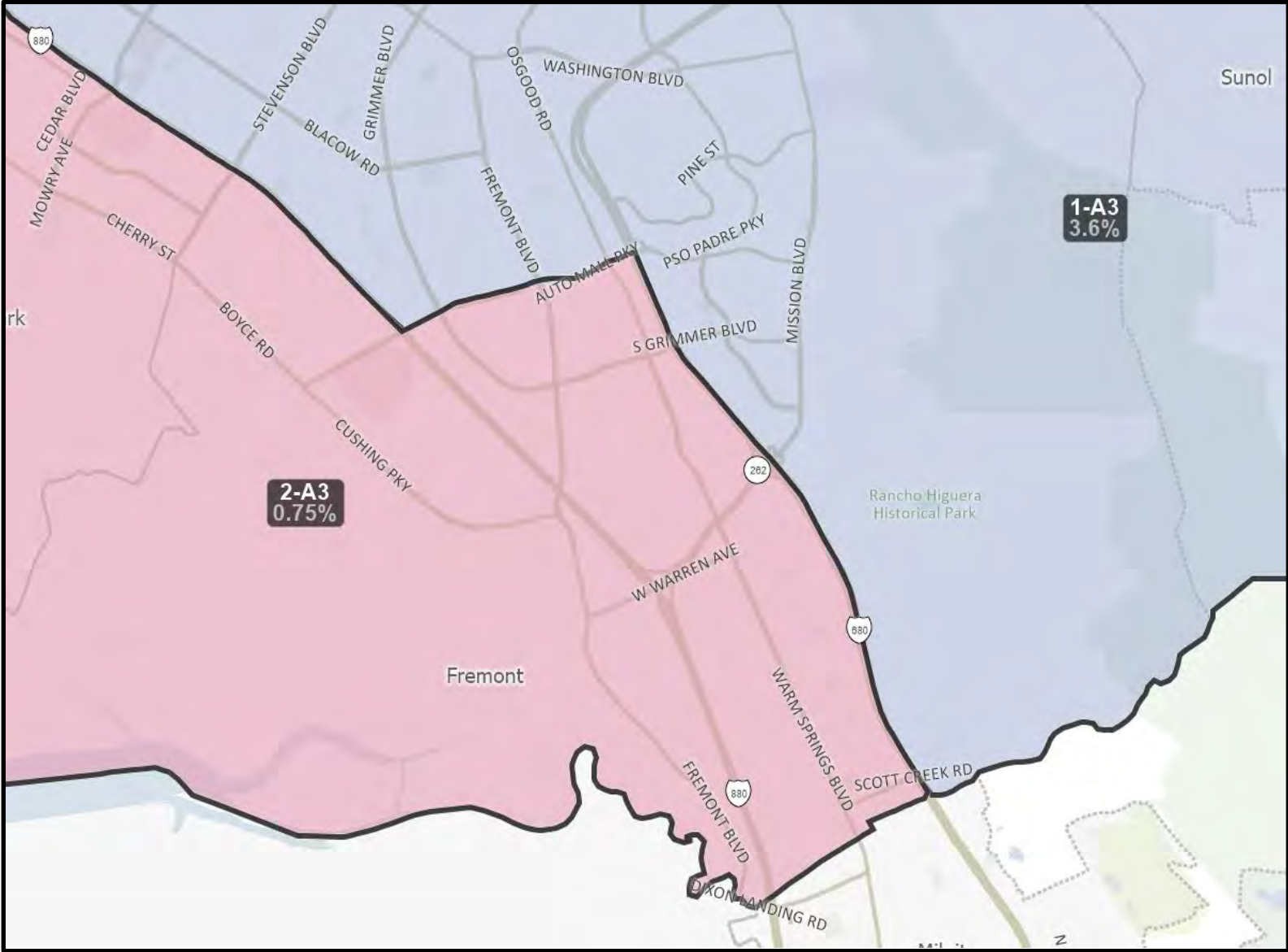
ALAMEDA COUNTY

**REDISTRICTING2021**

# Northern Fremont Boundary between District 1 and District 2



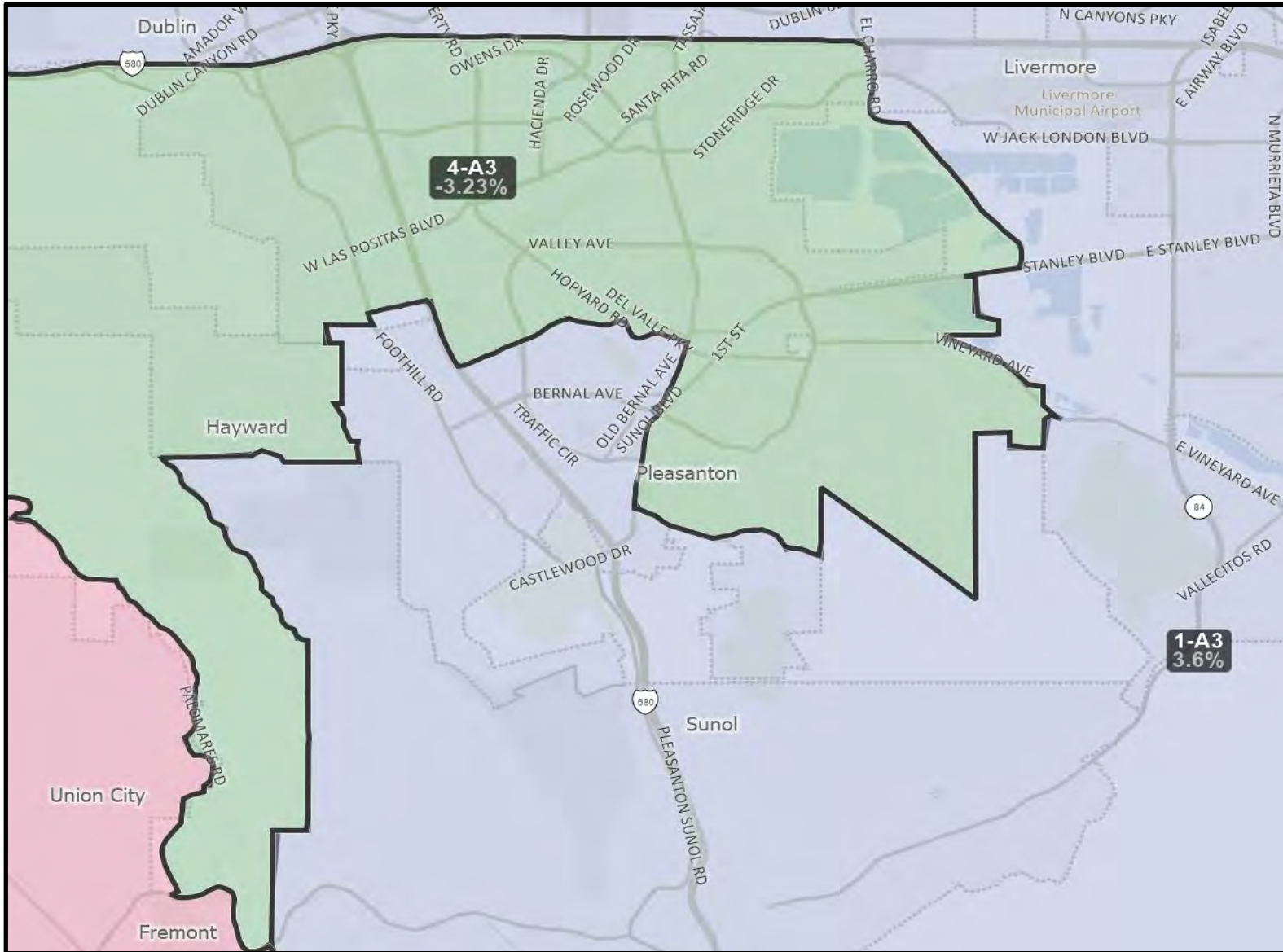
# Southern Fremont split between District 1 and District 2



ALAMEDA COUNTY

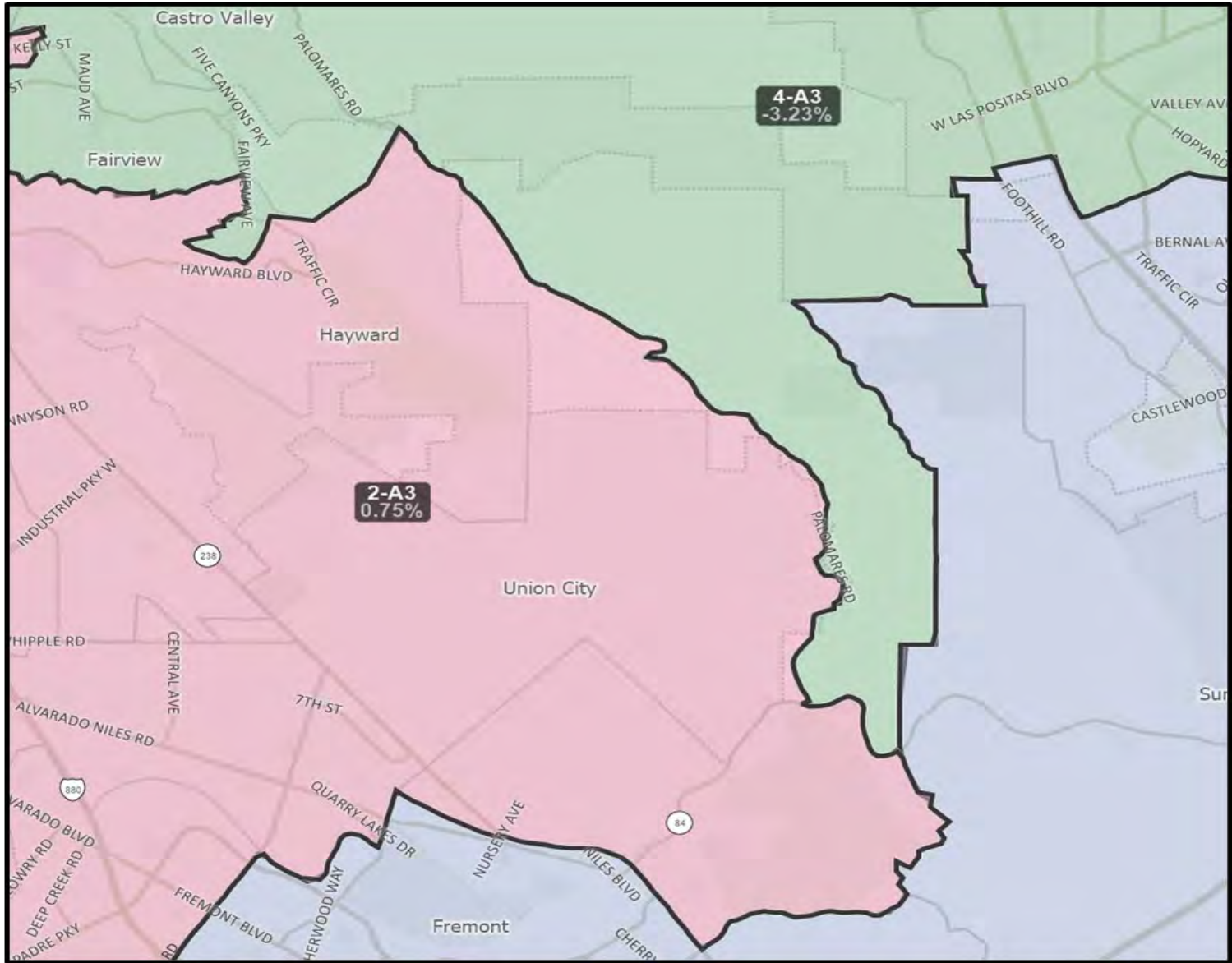
# REDISTRICTING2021

# Pleasanton Split Between District 1 and District 4



ALAMEDA COUNTY

**REDISTRICTING2021**

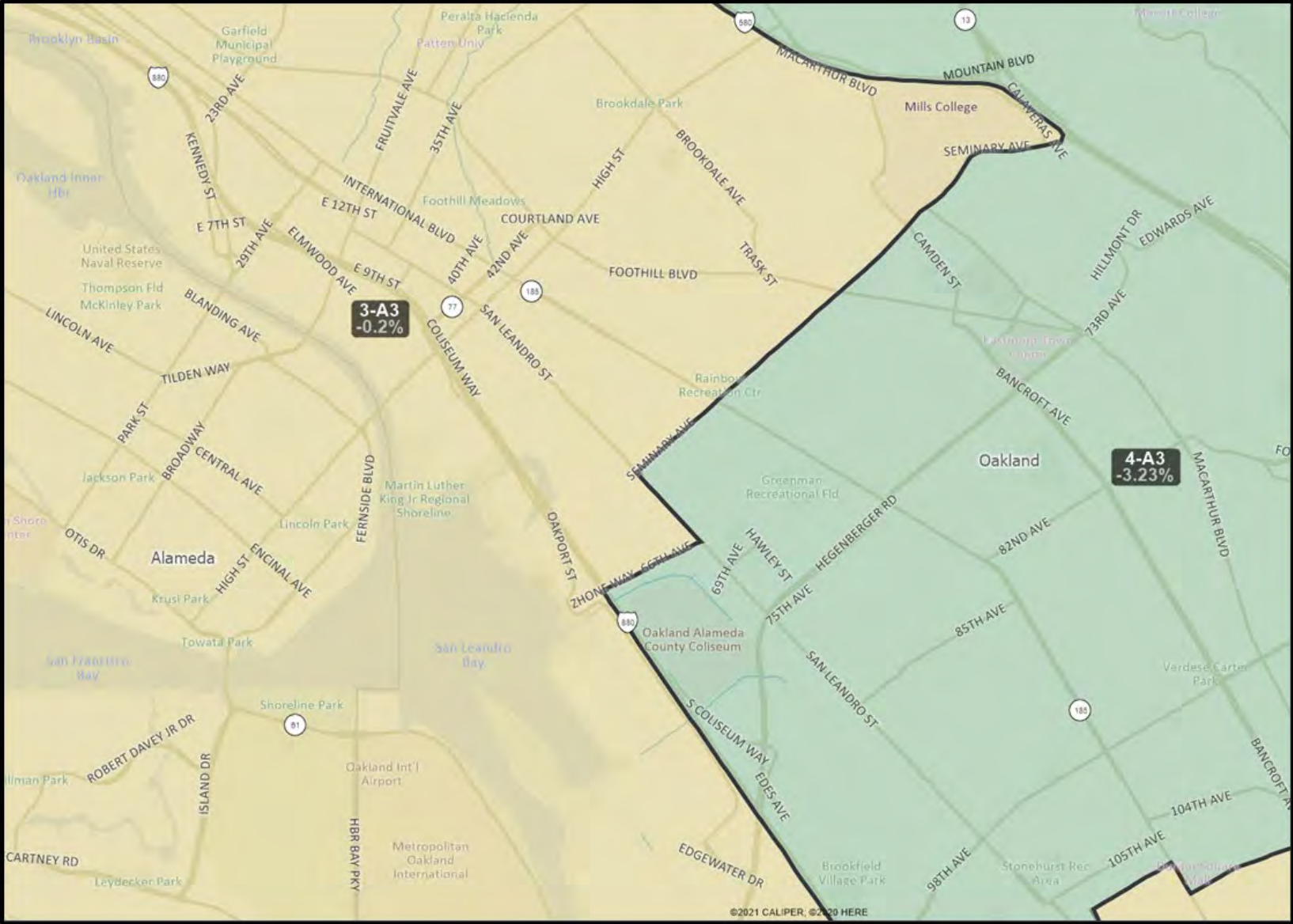


## Palomares Road Split Between District 2 and District 4

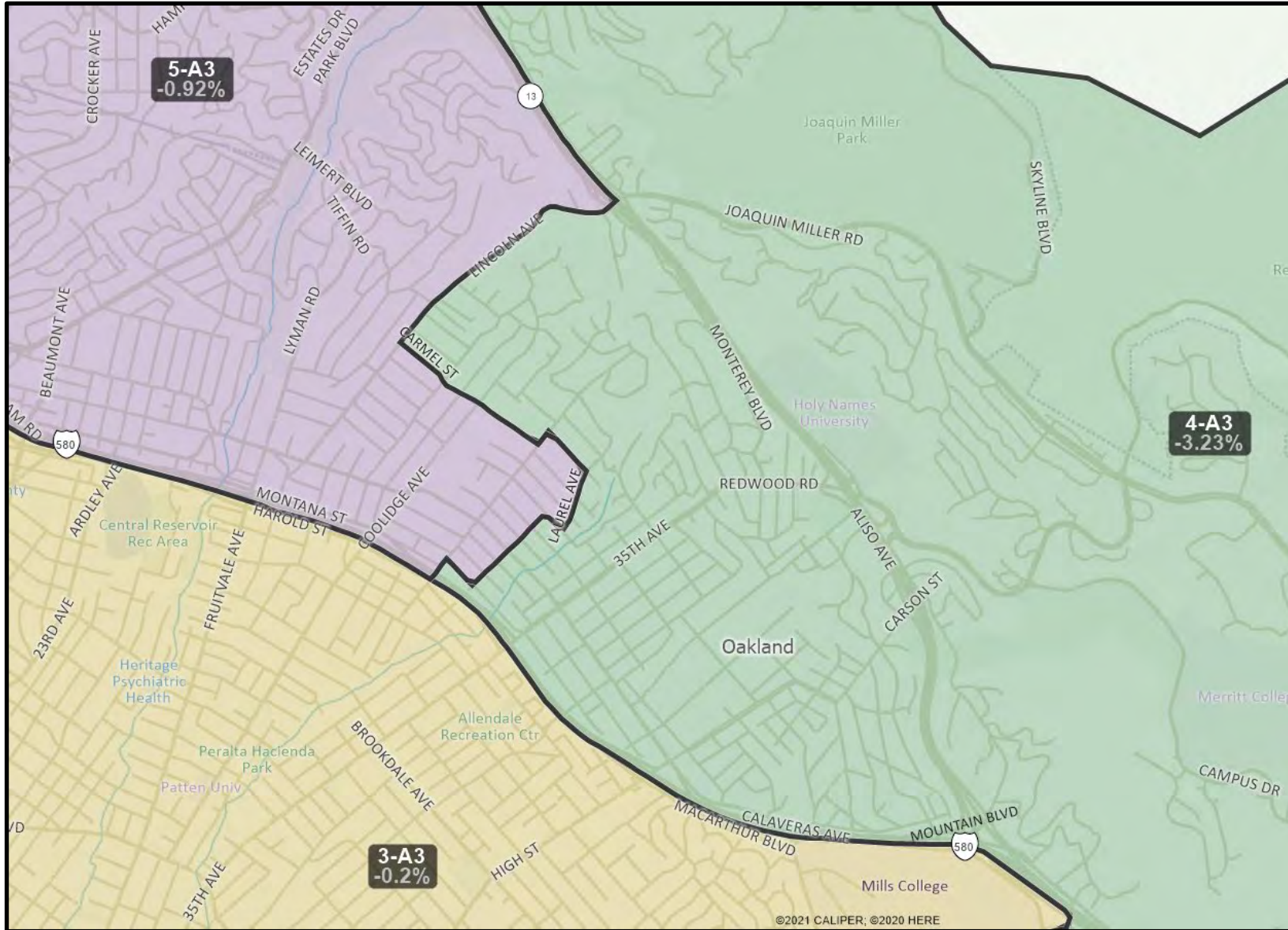
ALAMEDA COUNTY

**REDISTRICTING2021**

# Oakland Split Between District 3 and District 4



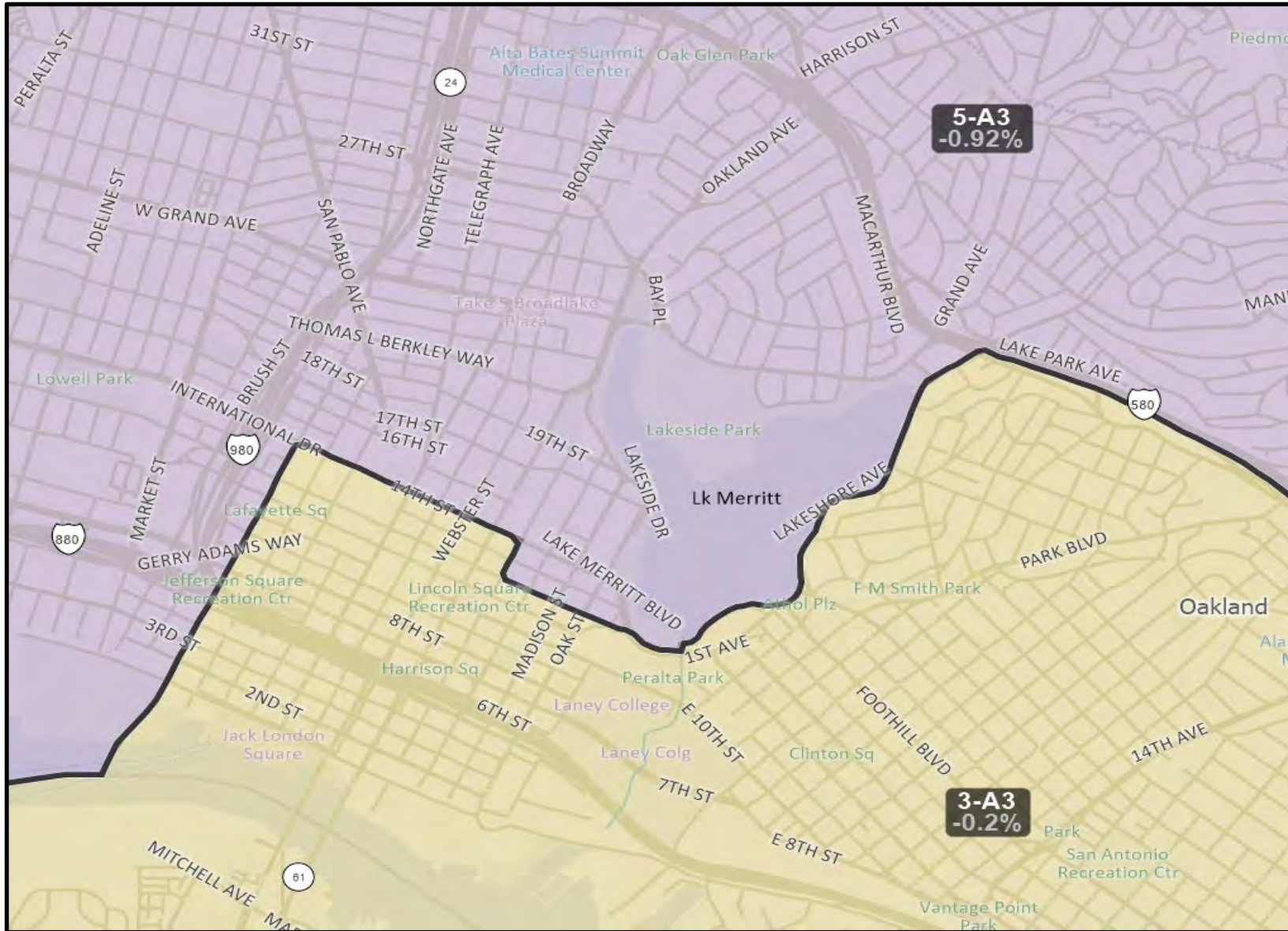
# Oakland Boundary Between District 4, 3, and 5



ALAMEDA COUNTY

# REDISTRICTING2021

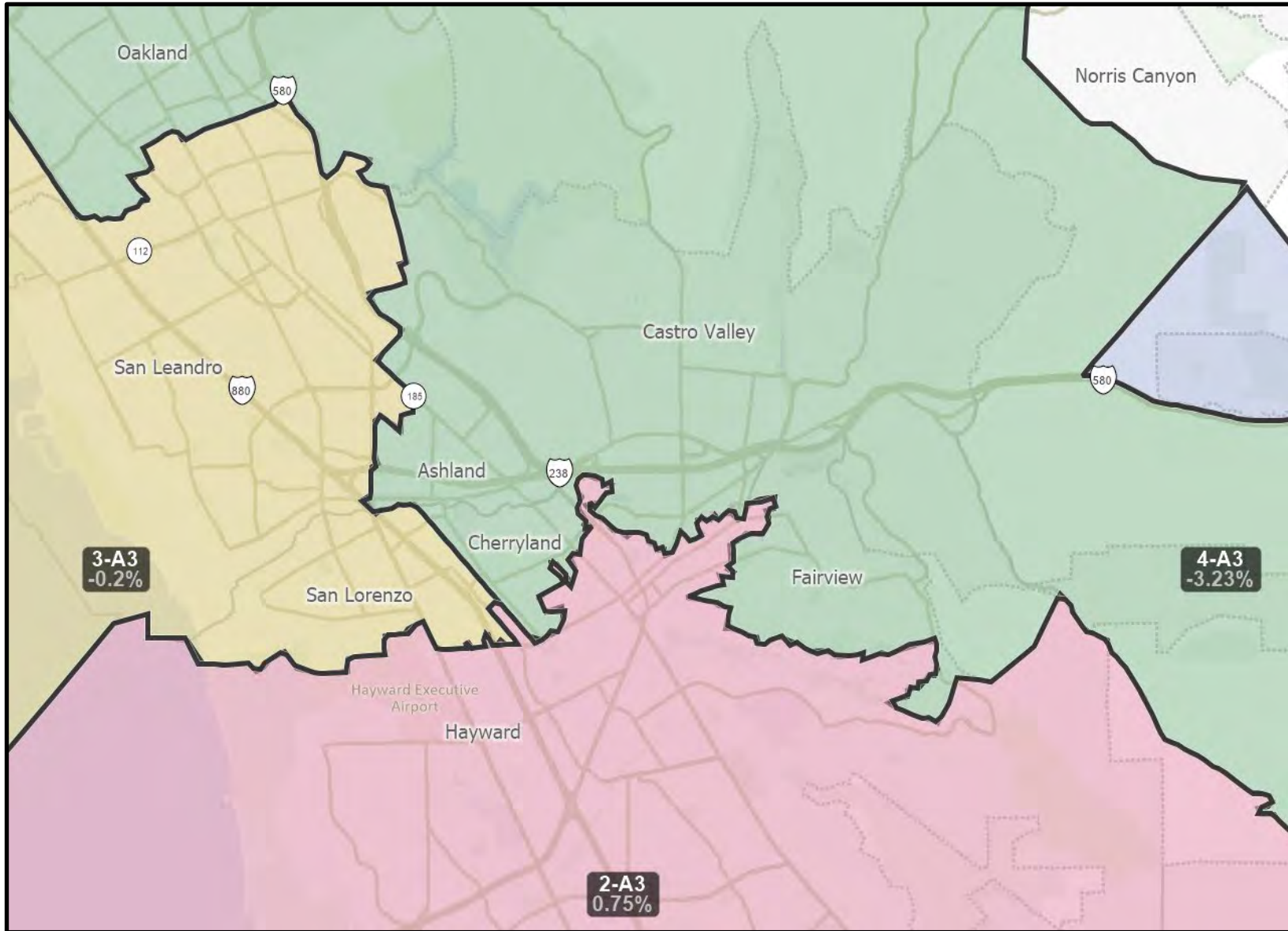
# Lake Merritt Boundary Between District 3 and District 5



ALAMEDA COUNTY

**REDISTRICTING2021**

# Eden Unincorporated Area



ALAMEDA COUNTY

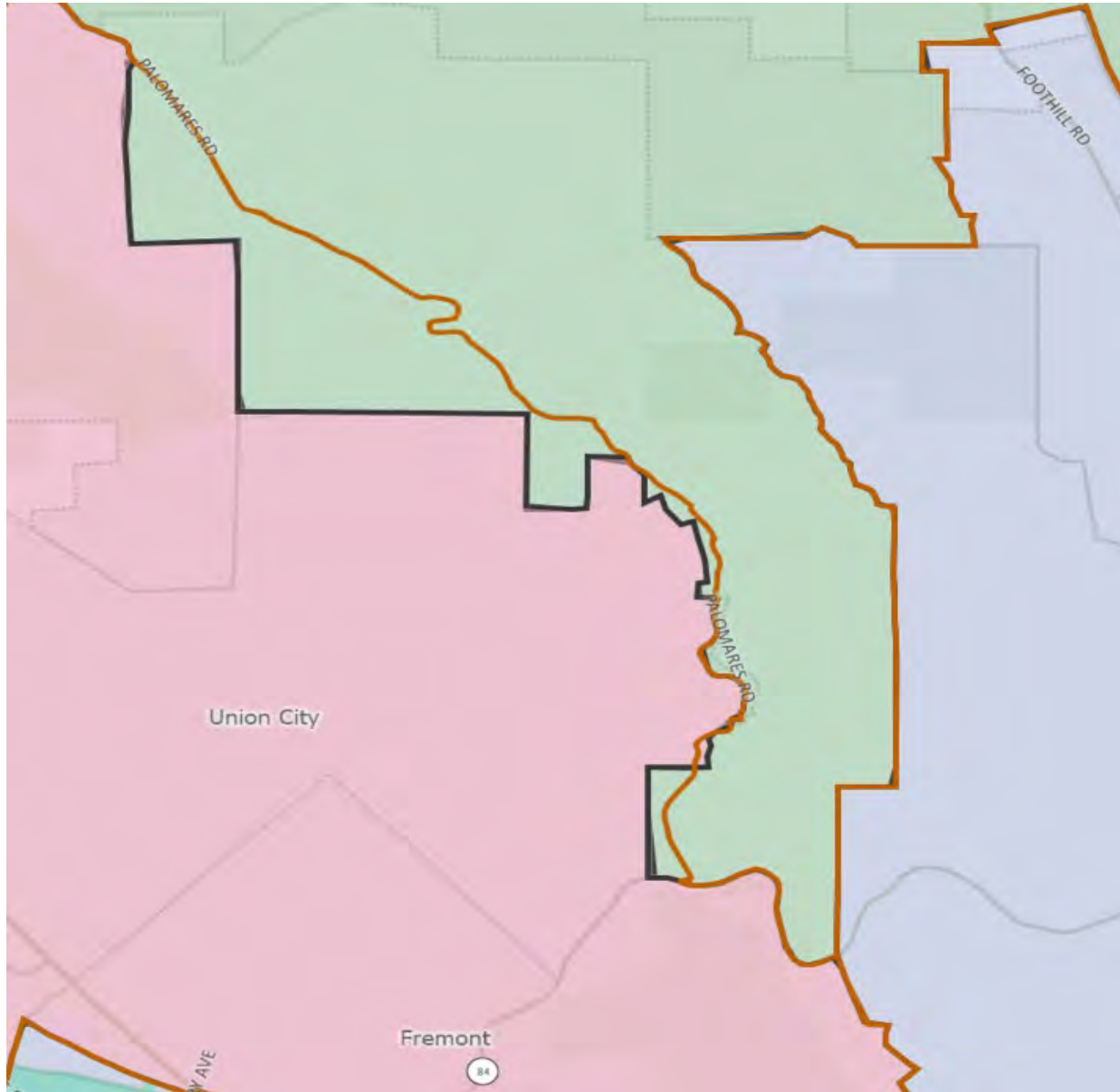
# REDISTRICTING2021

# Requests for Potential Changes

---

- Staff received inquiries from Board offices if the draft final redistricting map may be further amended before introduction and first reading of the adopted ordinance.
  - Modification Between D3 and D4 to Oakland Neighborhoods
  - Modification Between D4 and D2 to Palomares Road and Unincorporated Area
- Minor modifications can be made if they otherwise conform with state, local, and federal law.
- Should the Board be interested in considering further amendments to the draft final map, the consultant can make live mapping modifications to the “finalist” map (Modified Visualization A3), with your Board’s direction, before the first reading of the adopting ordinance.





## Palomares Road and Unincorporated Area Modification Between D4 and D2

Finalist Map: Modified Visualization A3 boundaries are shown in **brown**.  
December 3, 2021

ALAMEDA COUNTY

**REDISTRICTING2021**



**QUESTIONS?**

<https://redistricting2021.acgov.org>